

MASTERFLEX® 3000

Sealing system for irregular and unconventional joints

DESCRIPTION

MASTERFLEX 3000 joint sealing system consists of two products - **MASTERFLEX 3000** tape and **CONCRECIVE 1446** epoxy. The **MASTERFLEX 3000** tape is a highly elastic, rot-proof and chemically resistant sealing tape. **CONCRECIVE 1446** is a two part epoxy compound which establishes a strong bond to various types of substrate.

RECOMMENDED FOR

Sealing of construction joints, expansion joints, connecting joints, cracks and crevices to ensure a long-term waterproof and functional building envelope.

Typical uses are for concrete tanks, cast and cement-pipe connections, bridge decks, tunnels, water towers and reservoirs, ponds, silos, containers, secondary tanks. **MASTERFLEX 3000** can be applied on dry or slightly humid substrates. It is ideal for joints with very large expansion or irregular, broken joint flanks. **MASTERFLEX 3000** is grey coloured, weather and waterproof.

FEATURES AND BENEFITS

- durable
- long lasting elasticity, even at low temperatures
- root resistant
- cost effective
- approved for use with potable water
- easy to apply
- user friendly heat welding tape overlaps
- can be applied horizontally, vertically and even overhead

APPLICATION

Surface Preparation

Contact surfaces must be clean and free from dust, grease, water, oil, and other contaminants impairing adhesion. Concrete should be at least 4 weeks old. In order to provide maximum adhesion, concrete surfaces should be mechanically abraded.

Application

To provide a 'base coat' of epoxy adhesive, apply the **CONCRECIVE 1446** on both sides along the joint or crack on the prepared substrate, preferably with a notched trowel or spatula. Layer thickness should be about 1-2mm. When sealing cracks or narrow joints the **MASTERFLEX 3000** tape should not be bonded along the centre line of the tape. A minimum unbonded width of 20mm is recommended to allow for expansion and contraction.

Wipe the edges of the tape with **MASTERFLEX 3000 Cleaner** then place the clean and well-aired tape immediately into the adhesive layer and press well in with a roller (for very wide joints draw the tape suitably into the joint so that a hollow is formed).

Apply the **CONCRECIVE 1446** 'top coat' wet-on-wet with the 'base coat' ensuring the edge of the **MASTERFLEX 3000** tape is completely covered with **CONCRECIVE 1446** to a thickness of 2-3mm.

Notes:

- By warming up the membrane, it can be stretched over slight irregularities of the substrate. The same method can be used in case of corners, cavities, pipe crossing.
- In the case of negative water pressure, back up the membrane with an adequate support eg steel sheet.
- If individual tapes need to be connected into longer pieces (also T-pieces etc) they can easily be joined using an appropriate heat welder as per the following:
 1. Provide an overlap of 30mm.
 2. Cut the tape to size where required.
 3. Round the corners of the top tape.
 4. Prepare the bottom tape thoroughly with an abrasive pad (grit size 150) to a minimum width of 30mm.
 5. Clean bottom tape thoroughly to remove any dirt.
 6. Prepare the underside of the top tape as per steps 4 and 5.
 7. Using the heat welder, spot fix along the width of the tape joint to provide initial bond.
 8. Final weld the joint along the complete width of the tape, using a narrow roller to ensure full adhesion between the top and bottom tapes.
 9. Welding temperatures – 1mm thickness = approx 270 C (or 4 on the Leister Triac); 2mm thickness = approx 360 C (or 5.5 on the Leister Triac).

PROPERTIES

Shore Hardness A (ISO 868)	ca.80
Tensile strength (EN ISO 527-1)	> 6 N/mm ²
Elongation at break (EN ISO 527-1)	> 400%

PACKAGING

MASTERFLEX 3000 is available in thicknesses of 1mm & 2mm and in a variety of widths from 100mm to 1 metre. Rolls 20m in length (all sizes).

STORAGE

Store **MASTERFLEX 3000** well protected against sunlight at ambient temperature in dry conditions.

PRECAUTIONS

For the full health and safety hazard information and how to safely handle and use this product, please make sure that you obtain a copy of the BASF **Material Safety Data Sheet (MSDS)** from our office or our website.

MASTERFLEX® 3000

Figure 1 - Sealing of cold joints

1 MASTERFLEX 3000 2 CONCRECIVE 1446

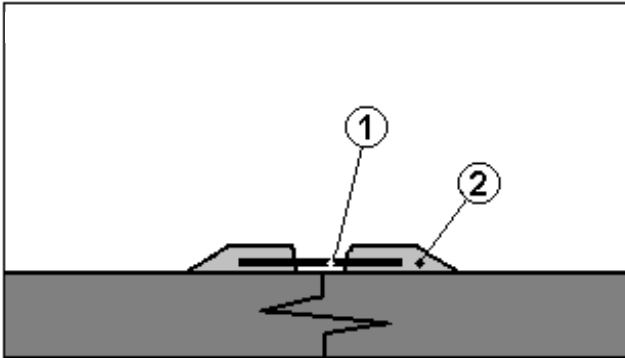


Figure 3 - Sealing of a 90° construction joint

1 MASTERFLEX 3000 2 CONCRECIVE 1446

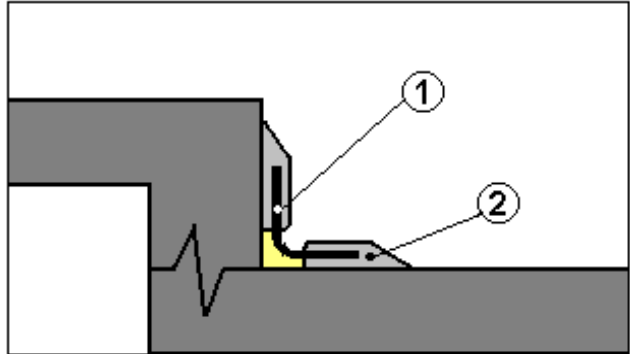


Figure 2 - Sealing of expansion joints

1 MASTERFLEX 3000 2 CONCRECIVE 1446

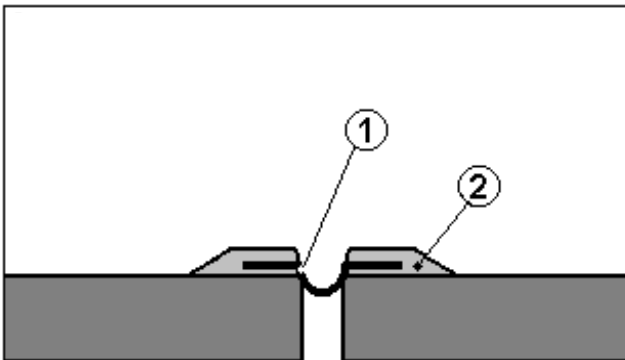
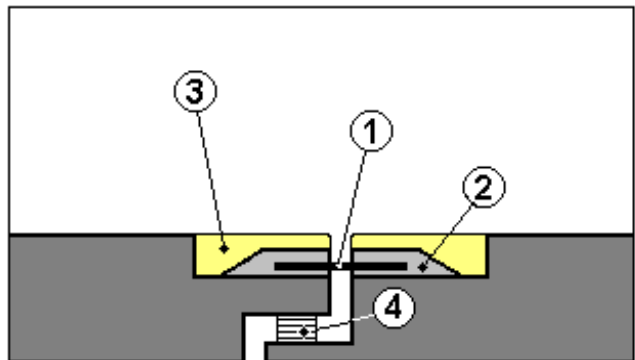


Figure 4 - Waterproofing of specific joints

1 MASTERFLEX 3000 2 CONCRECIVE 1446
3 Nosing mortar 4 Bearing



AMflex3000/6/1011

STATEMENT OF RESPONSIBILITY

The technical information and application advice given in this **BASF** publication are based on the present state of our best scientific and practical knowledge. As the information herein is of a general nature, no assumption can be made as to a product's suitability for a particular use or application and no warranty as to its accuracy, reliability or completeness either expressed or implied is given other than those required by law. The user is responsible for checking the suitability of products for their intended use.

NOTE

Field service where provided does not constitute supervisory responsibility. Suggestions made by **BASF** either orally or in writing may be followed, modified or rejected by the owner, engineer or contractor since they, and not **BASF**, are responsible for carrying out procedures appropriate to a specific application.

BASF Australia Ltd
A.B.N. 62008437867
Head Office: 11 Stanton Road Seven Hills, NSW 2147
Ph. (02) 8811 4200

Newcastle (02) 4961 3819
Canberra (02) 6280 6010
Brisbane (07) 3633 9900
Townsville (07) 4774 7344
Melbourne (03) 9549 0300

Adelaide (08) 8139 7500
Perth (08) 9366 2600
Darwin (08) 8984 3269
Kalgoorlie 0417 772 355

BASF New Zealand Ltd
BASF WEB SITES

Head Office: 45 William Pickering Drive, Albany, Auckland Ph: (09) 414 7233
www.basf-cc.com.au www.basf-cc.co.nz www.meyco.basf.com